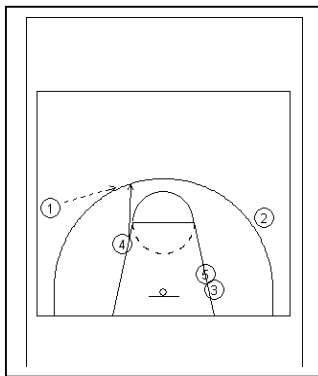
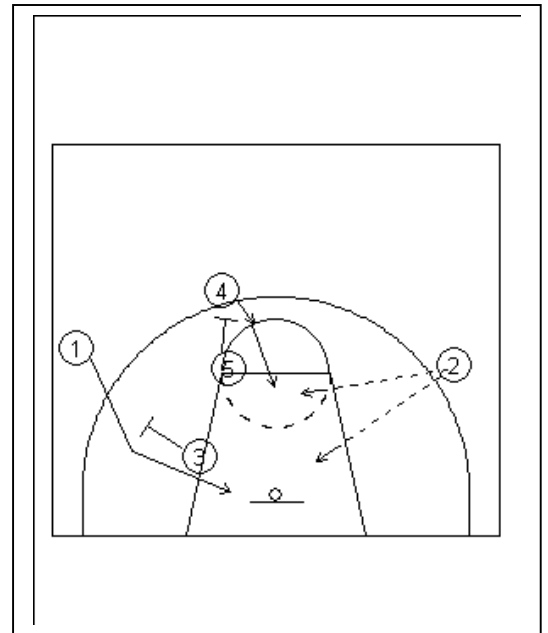
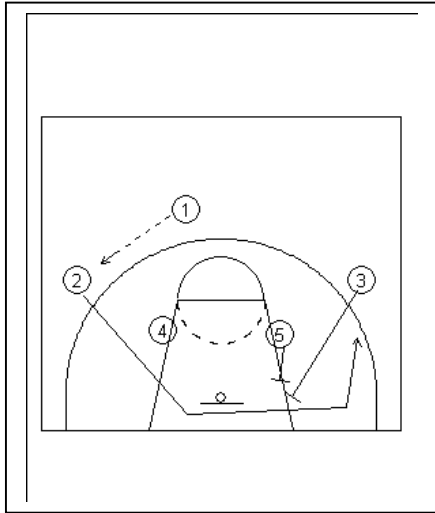


Twenty one

Starts with the guard 1 pushing the ball hard to the right wing.

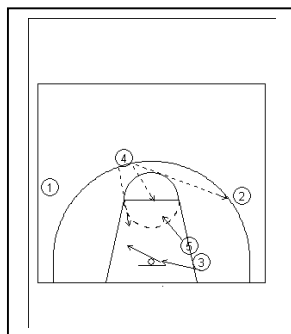
2 breaks away and cuts hard under the screen at the low block by 3 and 5



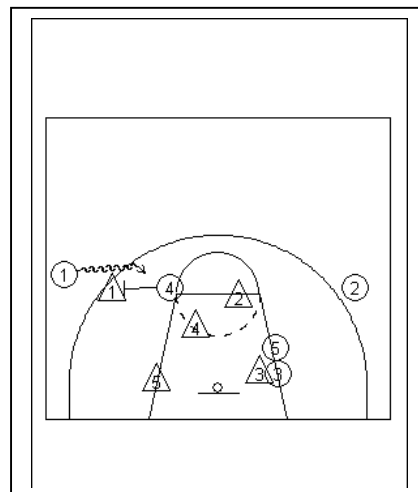
1 now passes to 4 who steps up high for the reverse pass looking for 2. We must see what the defence gives but generally

2 will be looking for a outside shot.

There is a continuation where 5 now sets the screen for 4 3 sets for 1 and they cut to the basket.



4 is left looking for passes to 2 then 5 and 3 who can open to the middle in gaps.



This can also be used against the zone Difference is 4 now sets a screen for 1 on the outside guard, of course only if the guard actually goes out to play d on 1, 1 then looks to penetrate the ball drawing players and dishing of to 5 and 3 stepping into the gaps left by the defensive reaction 2 becomes the safety and also must look to step into position for